



Mamautari Newsletter

MFMRD Bairiki, Tarawa P.O Box 64 Phone no: 21099 Fax no: 21120

Volume 1 issue 5. 14th July 2009

Kanoan am Beeba iteranibaa

**Katamaroa na-
kon te nei ni
Baneawa** 1

**Rongorongo man
te Fisheries Divi-
sion** 2

**Fisheries Licens-
ing and Enforce-
ment Unit** 3

Karikirake koonā 4

**Temwaiku Eco
farm** 5

Mineral Unit 6

**Te tabo ni kab-
webwe I Ambo
(Aquafarm)** 7

Rongorongo aika Kimototo.

Tiwiita ma Fisheries Assistant 2

Kanikina iaon taian ati 3

Ana katanoata ECO FARM 4

Kakatai iaon kanan te Man 5

Buokaia ataein te reirei 6

Rongorongon te Tiwiita 7

KORAKORA TE KAKAMWAKURI N ANA TABO ECO FARM ARE I TEMWAIKU



E korakora te kakamwakuri nakon te nei ni baneawa are I Temwaiku. Iai 14 mwaitin taian nei ake e waakinaki te mwakuri ni katamaroa iaioia ao man te mwaiti anne uoua aika a tia ni kanoaaki ma te kantan- inga iai bwa ana roko n te tiaaiti kanoaia inanon November te ririki aio.

Mwaitin kanoan teuana te nei bon 20,000 ao anne are e katautauaki bwa ai bon mwaitin naba are ana kabwakaaki nakon neei ake nikiraia ngkana e tia te mwakuri iaioia. E taketenaki banen te ririki aio bwa e na bobonga aron te mwakuri ao n tauraoi naba ni kanoaaki n te baneawa.

Man Te Fisheries Division

TAIAN TAWAA (FINGERLINGS) NAKON TE ABAMAKORO AE NIKUNAU.



Taian tawaa ao baneawa

Iai te mwaiti ae teuana te ngaa (1,000) mwaitin taian tawaa (uarereken te baneawa) ake a rienaaki man te nei are i Ambo ao man tia n nikiraki n te Abamakoro ae Nikunau. Boni iai taian tawaa ake a tia ni moan nikiraki n te abamakoro aio inanon ririki aika nako ma te kanganga bwa aki roko n are

kantaningaki ngke a bane naba ni mate.

E tuai kona ni kamatoaki bwa tera raoi ae karika te kanganga aio nakon taian tawaa aikai ma aio te kauoua ni kakatai are e na noraki mwiina bwa ana iai te kanganga ke ana akea.

MANIN TE NGANGA INANON NAMAN TARAWA.

Aorakin te ika ae te nganga e moan riiotinaki rekena mai mwiin ana kakaae teuana te kurubu mai Amerika ae aranaki bwa te US— Scientist Group inanon te ririki 1956. N aia rii-boti ao manin te nganga n te tai anne e rangi ni korakora n reke inanon naman Betio.

Uabui tabun te ririki imwiina ao e a manga riiotinaki mai mwiin ana kaakae Dr Temwakei Tebano bwa manin te nganga e a buti inanon naman TarawaTeina-inano mai Betio nako aan Bikenibeu.

Inanon ririki aika 1983-1984 ao e a karaoa ngkanne ana kakaae te Botaki n Akawa iaon manin te nganga inanon naman Tarawa ao

e kuneaki bwa man te tabo are e a tia n rootaki are mai Betio nako aan Bikenibeu ao e reiti-nako nako aan Temwaiku.

Iika ake a rootaki n te aoraki aio bon ikan aon te ora n aron te kuau, te ingo, te nrekereke ao a mwaiti riki.

Ni karokoa taai aikai ao e teima-toa karaoan te kakaae aio man te Botaki n Akawa are I Tanaea ao man riiotinaki naba bwa e ngae ngke e a butinako te aoraki aio nakoia iikan aon te ora inanon naman Tarawa, ma iai te kekeri-kaaki nakon mwaitin taian iika aika rootaki iai.

TE REIREI MA TAAN KATANEIAI IAON TE AKAWA (FISHERIES ASSISTANT TRAINEES) IAON TE SEAWEED.

E a tia ni bobonga te kataneiai are karaoaki nakoia taan Kataneiaaki n te akawa ke Fisheries Assistant Trainees ae maana bon teuana te wiiki ao are e karaoaki man 20 nakon 24 bongin Tuurai.

Oin te kantaninga n te waaki aio bon reiakinaia taan kataneiai aikai imwain ae ana bon waakina tabeia n aia abamakoro ake ana kamwaeaki nako iai imwiin banen aia kataneiai man te Botaki n Akawa.



Inanon te waaki aio ao a tia ni karaoa teuana aia beera n Tiwiita ao are e tabe ngkai ni bubura ao ni maeuraoi arokaia n aia o-ni-kabwebwe are i Ambo.

KATANOATA

E teimatoa te tabo n akawa ni mwangana are tabe ma te raitienti bwa e tauraoi naba ngkai ni butimwaai taian kani-kinaa ake a kuneaki n nim ma taian ati ke baiura, moarariki nakoia te koraki ake a kakabongana te nako marawa.

KANUANGA



1. Ingimea ma ati ake a kanikinaeaki n te babobo e na bon akea riki kanikina tabeua irarikina ma e kona ni iai riki te kauoua ae bon aekan naba anne ni iteran nukana are teuna



2. Te kanikina ae kirin e bon kaotia ba bon iai te aekaki n taeki teuna inanon birotona



3. Ingimea ma ati ake a kanikinaeaki n te kanikina ae e aoranti e boni kaotia ba bon iai naba te aekaki n taeki teuna ae kaokoro riki inanon naba birotona.

Man Te FLEU

KORAKORA TE TABEAIANGA IAON UTUUN TAIAN INGIMEA

Utun nako te ingimea n aron te ati, te baiura, bon ngaia oin kaubwain marawa are e korakora kainanoana ibukin te waaki ni karikirake ao tiaki tii ngaia ma bon ibukin naba te tanna inanon te bong teuna ma teuna. Aaba inanon te Betebeke a kinaaki ao n ataaki ni buburan aia marawa are ngaia ae kabwaroa te kabwaia ao mani katikii nanaoia aaba aika bubura bwa ana roko man akawa ao are e boboto akawaia iaon utun nako te ingimea. Ibukina ngke e noraki bwa e korakora akawaakin utun te ingimea ma te ati ao iai te kantaninga bwa e tabe ni kekerikaaki mwaitiia n te aro are e karika te tabeaianga nakoia aaba n te Betebeke bwa e na bua kaubwaia aio inanon te tai ae aki maan ngkana e teimatoa aron anaakia. Tiaki ti ngaia ma ngkai e noraki naba bwa e korakora kainanoana irouia aba aika bubura. Ibukin aio ao iai te komitin n tararua are oin tabena bon tararuaan ma tiatianakin akaawan te ika inanon marawan te Betebeke ao e kinaaki n arana ae te WCPFC. Te rabwata aio e a tia ni karaoi taiani kainibaire ake a kantanigaki bwa aaba ake a mena iaan ana tararua te komitin

aio a kabaeaki ni kabane nako iai. Kainibaire ake a kaweneaki ana bon kona n riki bwa aanga ibukin tiatianakin anaakin utun te ingimea.

Tabewa ibukon kainibaire bon katokan kaboonganakin taian booera inanon uoua namwakaina are e moa kamatoaakina man teuna bongin Aokati te ririki aio nakon Tebetemba te ririki naba aio. Tiaki tii ngaia ma katokakia Aobutiewati (Observers) ake ana riki bwa mataia kain te Botaki n Akawa iaon kaibuke ake a raitienti n akawa inanon marawan nako te Betebeke.

N reitaki ma aio ao e karaoa ana bowi te komitin ae te WCPFC ma aaba ake a mena iaana i Honiara, atuun kawan Toromon. Oin te kantaninga n te Bowii aio bon ongoraeakinan taian kainibaire ake a tia ni kaweneaki man te rabwata aio bwa a uara ao a bwakaa iaa kakoroa nanaoia mai irouia aaba aika inanon te rabwata aio.

Ngkai Kiribati e bon kaaina naba te rabwata aio ao bon iai naba ana aomata are e mwananga ni kaea te Bowii aio.

ANA BUREITIMAN TE BOTAKI N AKAWA IAON

Niiman ana moan aine Kiribati n riki bwa Observers, teniman mai buakoa a tia n tokarii aia kaibuke ake ana mwakuri iaoia ao uoman a tikun tataninga reken aia kaibuke. Naake teniman bon Nei Kirataura Bauro are e anaaki ni baona n te erekabuta (helicopter) nakon ana kaibuke are ena mwakuri iaona. Naake uoman bon Nei Toaiti. Vaguna ao ai Hannah Malcon Rava.

Rongorongo Man Te Planning

IBUROKI TE MWAKURI IAON AUTI NI KAMWAITORO AKE I TABITEUEA MEANG AO TABITEUEA MAIAKI.



Iai noran birimwakan taian kateitei iaon auti ni kamwaitoro are a waakinaki kateakiia iaon abamwakoro aika Tabiteuea Meang ao Tabiteuea Maiaki. n aron te ribooti are e taekinna te aobitia are e mwananga ibukin tuoan taian kateitei aikai ao e taekinna bwa iai te katautau bwa te taakete iaon kateakin auti ni kamwaitoro aikai are teniua te namwakaina e na taraa n ae e na teke nanona iaon taina ke ni moantaai riki nakon te tai are e a tia n taketenaki aio, n reitaki ma aio ao e ribotiinna naba te aobitia aio bwa kateitei aikai a waakinaki kateakiia ni moan te namwakaina ae Tuurai te ririki aio ao n taraan tamneia akana i eta ao a kaota aron te

kakamwakuri ae korakora. Aobitia ake a mwananga ibukin karaoan te tutuo aio bon temanna man te aobiti are tabe ma karikirake inanon te Botaki n Akawa n raonaki iroun te aobitia man te tabo ni mwakuri ibukin Mwakuri ao ai te Minita man te Botaki n Akawa ao Karikirakean Kaubwaira mai Marawa. A kabanea teuana aia wiki iaon te abamakoro ae Tabiteuea Meang, ike a bon reke naba aia tai n noora te kateitei are iaon Tabiteuea Maiaki. E karairaki te tiim aio n te katenibong te wiki ae nako

ECO FARM

E kukurei ni katanoata ECO FARM bwa a tauraoi ngkai ni kabonakoaki mai irouna bwaai n aron aikai:

Bwaai aika kabonakoaki	Tein booia
Smoke fish	\$9.00/kg
Fresh Egg	\$0.50c each
Fresh milk fish	\$3.00/kg
Firewood	\$10.00/truck
Tano	\$22.00/ truck (2 ton)
Fingerlings (tawaa)	\$0.10 each

Ibukin rongorongona ae bwanin ao reitaki ma ngaira iaon te namba ae 28212.

Need Mamautari Newsletter
Delivered to your email!

Drop us an email at:

subscribe@mfmrd.gov.ki

OR

call (00686)21099

AIA KOONA ATAEIN TE REIREI

Ko a bon bae n tia n ongotao ae nang roko ana Kambwana Kiribati are e na kabonakoa te atama ma te tano nakoia aomata ma kambwana nako ake a kainanoia ibukin te karao kawai, katean auti buriki, karaoakin te buriki ao a mwaiti riki.

Oin katean te Kambwana aio bwa e na buoka kauarerekean te kanganga ae e a taonaki iai ngkai abara ae Kiribati ae Te Kanakinako (Coastal erosion) I mataniwiin te aba.

.Te anai atama ma te anai tano bon ngaia ae kawaekooa buan te tano mai I mataniwiin te aba ao ni karekea kairootakira man kanganga nako ake ti na kaaaitara ma ngaai man rikiraken iabutin taari ma bibitakin nako kanoan te bong.

Ngkai abara ae Kiribati e bon rangi n rinano ao ti na bon rangi ni kairootaki ni kanganga aikai;

1. E na toka taari iaon te aba
2. A na rootaki kain amwarake ngkana e a toka taari.
3. E na kanakinako ara bike
4. Ana iekaki ara auti ni maeka
5. Ana tarika ara mwaniba ni moooi ao a mwaiti riki

Ma, ngkai te bike bon ngaia ara moan otanga ao katanakira man kanganga nako akanne ao e riai bwa ti na tararuaa raoi ara bike.

Ngkana e tei te Kambwana aio ao te kantanninga bwa e na rangi n uarereke te anai atama ma te anai tano ke aron te urubwai nakon ara bike ao e na rangi ni marurung ao n tauraoi ara bike ni kataniiira man kanganga akana oti ieta.

Ngkana ko tangiria ni mwengaraoi ao n aki mweeutiaki ni kanganga akanne ao e bon riai kauarerekean te anai atama ma te anai tano man am bike ma ko riai n kabooa am atama ma am tano man ana Kambwana Kiribati ae iaoni kawaina n roko ngkai.



©MFMRD

Mineral Unit

TE TIIM NI KAKAAE IAON MATANIWIIN TE ABA



Te bibitaki nakon matawinn te aba bon te bwai ae tabangaki n te aonnaba ae e nooraki naba i Kiribati. A mwaiti bwaai aika ana kona ni karika bitakin mataniwiin te aba n aron, rikiraken iabutin taari, te angibuaka, rietatan taian nao ao bon man ana tokobito te aomata. Te kakae are e karaoki irouia taan rabakau mai Amerika a kataia n nooria bwa baikara kanganga ke bitaki aika a kona n oti n tain te Au Maiaki ao te Au Meang (El Nino Southern Oscillation) ao n nooria bwa tera bitakin tein te aba mai iai.

Taan rabakau aikai a mwananga man te kura n reirei ae e riettaata ae te University of Kansas (KU). Dr. Gene Rankey bon ngaia are e kaira te mwananga aio n raonaki iroun Daniel Doolittle. A raonaki naakai iruon Kabure Yeeting ao Tion Uriam man te Botaki n Akawa ao Puta Tofinga man Aobitn Tararuaan Otabwanin.

Ibukin aia kakae ao a kabanea teuana te wiiki iaon Maiana ao Aranuka ike a kabonganai iai mwaabe ao tamnei man te Tiat-eraite (Satellite) ni kakaai taabo ake a kona n kaotii bitaki nakon mataniwiin te aba. Tiaki tii ngaia ma a bon tarai naba aron tein te aba ma te bike ao aron mwaingingin te atama, te atibu ao te tano.

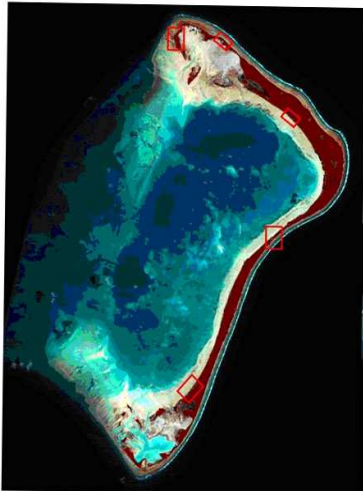
Man te kakae aio ao e na kona ni buoka ara atatai n aron bibitakin mataniwin abara. Tiaki ti ngaia ma e na kona naba ni buoka aron katean ara kai ni baire ake a irekerekere ma ara waaki ni kaitarai bitaki nakon mataniwin abara ake a irekerekere ma bibitakin kanoan bong.

E a mwanenaki mwanangaia naakai bon mai Amerika man te Te National Science Foundation (NSF) ao man te University of Kansas (KU).

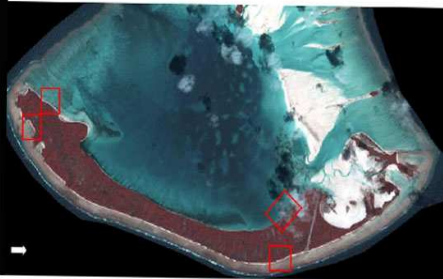
Mineral Unit

Mwabən abamakoro ake a karaoa aia mwakuri iai kain te tiim

Maiana atoll



Aranuka Atoll



Taabo akana mwakenaki n te baoki ae uraura bon taabo ake a kabonaaki ibukin karaoan te mwakuri kain te tiim ni kaakae.

U.S. – Kiribati Team Studies Coastal Stability and Processes

The coastlines of Kiribati are changing. To better understand how and why, a team of scientists from the University of Kansas (KU) and the Ministry of Fisheries and Marine Resources Development recently spent a field season observing and measuring shorelines on several islands. Through the data collected, and laboratory studies, the research team hopes to generate an understanding of how and why shorelines change, a first step to developing appropriate adaptation strategies.

The team, led by Dr. Gene Rankey (KU), also included Daniel Doolittle (KU), Kabure Yeeting, Tion

Uriam, and Puta Tofinga from Environment spent a week on Maiana and a week on Aranuka. Using historical and recent remote sensing images to identify “hot spots,” they went to the islands and measured beach profiles, observed landforms, and collected sediment and rock samples. This information provides a “baseline;” continued monitoring will document where and how the coast changes.

Many forces can impact coastal change, including sea-level rise, storms, natural variations in sand

(refer to right hand side for continuation.....)

Waaki te mwakuri I mataniwiin te aba irouia kain te tiim iaon Maiana.



....continued from left side)

supply, and wave height. This program is designed to explore the impact of ENSO (El Nino-Southern Oscillation) on island change. Changes in ENSO lead to change in wind direction and intensity in Kiribati. ENSO includes two phases – La Nina (gentle easterly winds, droughts) and El Nino (westerly winds, more rainfall). Summer 2009 represents a change from La Nina to El Nino conditions, and the project was designed specifically to collect data at the end of a La Nina cycle, and watch how the islands change.

The project “Impact of ENSO Climate Shifts on Islet Stability” was funded by the U.S. National Science Foundation and the University of Kansas.

RONGORONGON TE TIWIITA

Ae bon waakinako unikakin aroka n ana tabo ni kabwebwe te Fisheries Division i Ambo ibukiiia taan ununiki iaon Tarawa, Abaiang ao ai Maiana.

Ibukiiia kaiin Tarawa, e a bobonga unikakiiia ao e a waaki ngkai te ununiki ma tabeman moa kain TarawaTeinainano. Taan ununiki aikai bon man kaawa aika Tangintebu, Ambo ao ai Banraeaba

N reitaki ma anne ao aroka ibukin Abaiang a kantaningaaki bwa ana kamwaeaki nakon te abamakoro aio nakon te namwakaina ae Tebetemba.

Iai te katautau bwa aroka ibukin te abamakoro ae Maiana ana tauraoi nakon te namwakaina ae e na roko ke are imwiina.

A rineaki moa aaba aika Abaiang ao Maiana n te moan waaki aei ibukina ngke a bon rang uakaan ma Tarawa ike e na rang bebete iai aron tararuaakiiia.

Iririkin anne ao iai te kantaninga bwa e na reitakinako te waaki ibukin te tiwiita nakon aaba ake tabeua nakon moan te ririki ae boou.

Ambo Aquafarm



Aqua farm e ataaki n nanona ae te tabo ni kabwebwe iaon marin marawa n aron taian ika n aekaiia nako, ao ai marin nako marawa n aron taian were, nnewe ao a mwaiti riki. Ngkana ko tuai n nonoria bwa tera ke aekakira te tabo ni kabwebwe ke ni kaabung iaon bwain nako marin marawa ao ko kona neweaba n tamnei aika ieta.

Aio bon ana tabo ni kabwebwe ke ni kaabung Taiwan iaon marin marawa n aekaiia nako are e a kateaki iaan ana reitaki te tautaeke ni Kiribati ao te tautaeke n Taiwan. n reitakira ma teure e tararua te tabo aio ae Robert Chang bwa tera oin katean te tabo ni kabwebwe aio irouia ao e taekinna teurei bwa kateakin te tabo ni kabwebwe n aron aio bon buoka karikirakean te tanna ibukiiia kain Kiribati.

Iririkin aio ao e reitia man taku Robert bwa inanon aia tabo ni kabwebwe ao iai mwaitin aia nei aika waniua ake a kabonganai ibukin taian baneawa ao tiaki tii ngaia ma a bon karaoi naba bwaai n aron aikai;

- Kanan taian man : aio bon te waaki are a karaoia ibukin

kanaia aia baneawa ake a kaikawaaia inanon aia nei bon iaon naba Ambo. Aia amwarake aio a bon karaoia man bwaai ake a reke mai iaon Kiribati n aron aikai;

te ota ni ben n renganaki ma bwain taari (tiwiita), ao te buraawa ao ai tabeua aia rengarenga ake a kaoii mai Taiwan.

Aia kaamwarake aio are a kabonganaa nakon aia baneawa. E reitia riki man taku teurei bwa kaikawaan te baneawa e bon nakon te maan ae itiuia ke waniua te ririki, ma ngkana e tararuaaki raoi aron kaamwarakeana.

- Iririkin karaoan te kaamwarake ao bon iai naba te tabo are e aranaki bwa te Aquarium ke te tabo are a kaawakinaki iai marin abara inanon taian kiraati n aron ane te tamnei akana oti akanne. Aio te tabo are ena reirei bukin kainanoia n aia bwai n reirei ao tiaki tii ngaia ma ena kona n riki naba te tabo aio bwa kanga te tabo ni kaneweaba.

ECO-FARM

KATAMAROA AO KARIKIRAKE NAKON TE NEI NI BANEAWA ARE I TEMWAIKU

Te OFCF ke Overseas Fishery Cooperation Foundation te kambwana mai Tiaban ngaia ngkai are e waakina te karikirake ma te Kambwana ae te Eco Farm iaon katamaroan taian Nnei ni Baneawa ake I Tanaea. E taku Iaira Mauere (te aobitia are kaira mwakurian taian nei aikai) bwa Te OFCF ngaia are e kenii Nnei ni karokoi n te nano are e tangiraki are ana maeuraoi iai baneawa ao a karietai riki oon taian Nnei n te aro bwa ngkana e rin taari ao ana aki taonako ao ni manga taonii nako Nnei ake tabeua. Ti aki ti ngaia ma e taku naba Mauere bwa a bon bwe-nauai naba marenan taian Nnei ni karaoi taian Channel n te aro bwa a naaki rangin abwabwaki bwa e aonga naba ni waekoaron kaitiakakina ke ni bwamwiiaki te ran ni kanakoaki mai inanon te Nnei.

E taku riki Mauere bwa ai uoua ngkai Nnei ake a tia n tau-raoi bwa 6-2 ao 5-2 ao are a bon tia naba ni kanoaaki n te Tawaa irouia kain te Eco Farm n te mwaiti ae 20,000 kanoan teuana te Nnei ao are a katautauaki bwa ana roko n te tiati (size) imwiin aua te namwakaina. A na tauraoi ni kaboaki nako inanon November te ririki aro. Iai riki teb-wii ma uoua mwaitin taian Nnei ake ana katiai kain te OFCF ao ni manga tauraoi naba ni kanoaaki irouia kain te Eco Farm.

Te katautau bwa e na bobonga katiaan mwakuri akanne ke te moan mwaneka (Phase I) inanon te ririki aei are nanona bwa iaoni kawaina ngkai n rawata te baneawa ni kaboaki nako mai irouia kain te Eco Farm.

KAKATAI N TE ECOFARM

Bon iai aia kakatai kain te Eco Farm ibukin kanan aia Tawaa, aio are a kabongana iai ikan te CPPL, a umunna ao imwiina a manga katioa n aia kaini-

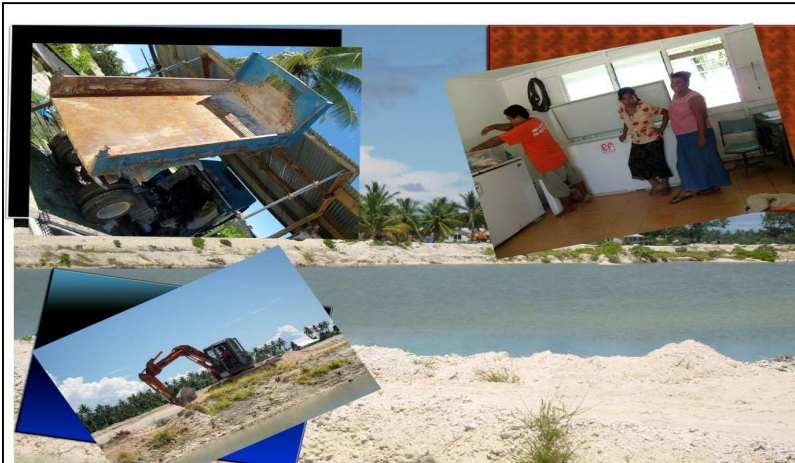


katio ae koro buburana. Imwin anne ao a renganna naba ma te burawa ao te ben ake man te Copra Mill ao a kaboboa ao ni manga taawiria riki ao ngkana e otinako man te kai n taawiri ao ai bon ti- tabo raoi ma



kanan te beeki are e roroko mai tinaniku. E taku Iaira bwa e boraoi riki ae a karaioa aio nakon are ana oota mai tinaniku ngkai e na rangi n rawata te mwaiti ae ana tangiria ibukin kanan aia man Te Tawa. A bon

KAKAMWAKURI INANON TE ECOFARM



tia n kabonganaa aia kakatai aio nakon kanoan aia Nnei ake uoua.